

Acta Crystallographica Section E

Structure Reports

Online

ISSN 1600-5368

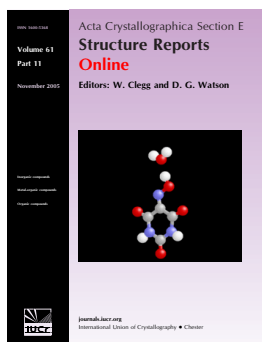
Editors: W.T.A. Harrison, J. Simpson and
M. Weil

(4Z,6Z,12Z,14Z)-2,10-Dimethyl-2,8,10,16-tetrahydro- dipyrzolo[3,4-*e*:3',4'-*l*][1,2,4,8,9,11]hexaazacyclotetra- decine-4,12-diamine

Anton V. Dolzhenko, Giorgia Pastorin, Anna V. Dolzhenko, Geok Kheng
Tan and Lip Lin Koh

Acta Cryst. (2009). E65, o1578–o1579

This open-access article is distributed under the terms of the Creative Commons Attribution Licence <http://creativecommons.org/licenses/by/2.0/uk/legalcode>, which permits unrestricted use, distribution, and reproduction in any medium, provided the original authors and source are cited.



Acta Crystallographica Section E: Structure Reports Online is the IUCr's highly popular open-access structural journal. It provides a simple and easily accessible publication mechanism for the growing number of inorganic, metal-organic and organic crystal structure determinations. The electronic submission, validation, refereeing and publication facilities of the journal ensure very rapid and high-quality publication, whilst key indicators and validation reports provide measures of structural reliability. In 2007, the journal published over 5000 structures. The average publication time is less than one month.

Crystallography Journals **Online** is available from journals.iucr.org

(4*Z*,6*Z*,12*Z*,14*Z*)-2,10-Dimethyl-2,8,10,16-tetrahydrodipyrzolo-[3,4-*e*:3',4'-*I*][1,2,4,8,9,11]hexaazacyclopentadecine-4,12-diamine

Anton V. Dolzhenko,^{a*} Giorgia Pastorin,^a Anna V. Dolzhenko,^a Geok Kheng Tan^b and Lip Lin Koh^b

^aDepartment of Pharmacy, Faculty of Science, National University of Singapore, 18 Science Drive 4, Singapore 117543, Singapore, and ^bDepartment of Chemistry, Faculty of Science, National University of Singapore, 3 Science Drive 3, Singapore 117543, Singapore

Correspondence e-mail: phada@nus.edu.sg

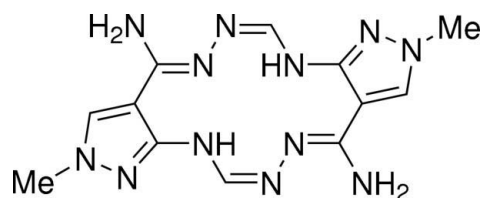
Received 3 June 2009; accepted 10 June 2009

Key indicators: single-crystal X-ray study; *T* = 223 K; mean $\sigma(C-C)$ = 0.003 Å; *R* factor = 0.062; *wR* factor = 0.151; data-to-parameter ratio = 14.1.

The title compound, C₁₂H₁₆N₁₂, is a centrosymmetric molecule which comprises of a hexaaza[14]annulene macrocyclic ring fused with two pyrazole rings. The macrocyclic ring is essentially planar, with an r.m.s. deviation of 0.0381 Å. The electron pairs of the amino groups are delocalized with the conjugated system of the macrocycle. Strong intramolecular N—H···N hydrogen bonds arranged in an *S*₂²(10) graph-set motif are present in the macrocyclic ring. In the crystal, the amino groups act as donors for intermolecular N—H···N interactions with the N atoms of the heterocyclic system, forming a network of two types of extended chains oriented parallel to the [101] and [011] directions. The crystal packing is also stabilized by weak intermolecular C—H···N hydrogen bonds formed between pyrazole C—H groups and N atoms of the macrocyclic ring, running in the [10 $\bar{1}$] direction.

Related literature

The title compound was synthesized according to Dolzhenko *et al.* (2009). For the synthesis and crystal structure studies of related macrocyclic compounds (as nickel complexes), see: Gradinaru *et al.* (2001); Gerbeleu *et al.* (1991); Leovac *et al.* (1993) and references cited therein; Simonov *et al.* (1988). For a review of the graph-set analysis of hydrogen bonding, see: Bernstein *et al.* (1995).



Experimental

Crystal data

C₁₂H₁₆N₁₂
M_r = 328.37
 Monoclinic, *P*2₁/*n*
a = 7.1470 (6) Å
b = 7.5593 (7) Å
c = 13.9174 (13) Å
 β = 91.866 (3)°

V = 751.51 (12) Å³
Z = 2
 Mo *K*α radiation
 μ = 0.10 mm⁻¹
T = 223 K
 0.22 × 0.08 × 0.06 mm

Data collection

Bruker SMART APEX CCD diffractometer
 Absorption correction: multi-scan (*SADABS*; Sheldrick, 2001)
T_{min} = 0.978, *T_{max}* = 0.994

5126 measured reflections
 1721 independent reflections
 1272 reflections with *I* > 2σ(*I*)
R_{int} = 0.037

Refinement

R[*F*² > 2σ(*F*²)] = 0.062
wR(*F*²) = 0.151
S = 1.06
 1721 reflections
 122 parameters

H atoms treated by a mixture of independent and constrained refinement
 $\Delta\rho_{\max}$ = 0.26 e Å⁻³
 $\Delta\rho_{\min}$ = -0.17 e Å⁻³

Table 1

Hydrogen-bond geometry (Å, °).

| <i>D</i> —H··· <i>A</i> | <i>D</i> —H | H··· <i>A</i> | <i>D</i> ··· <i>A</i> | <i>D</i> —H··· <i>A</i> |
|---------------------------|-------------|---------------|-----------------------|-------------------------|
| N3—H3N···N4 | 0.85 (3) | 2.09 (3) | 2.770 (3) | 136 (2) |
| N5—H5A···N1 ⁱ | 0.88 (3) | 2.33 (3) | 3.065 (3) | 141 (2) |
| N5—H5B···N6 ⁱⁱ | 0.85 (3) | 2.61 (3) | 3.466 (3) | 174 (2) |
| C3—H3···N6 ⁱⁱ | 0.94 | 2.51 | 3.402 (3) | 158 |

Symmetry codes: (i) $x - \frac{1}{2}, -y + \frac{3}{2}, z - \frac{1}{2}$; (ii) $-x + \frac{1}{2}, y - \frac{1}{2}, -z + \frac{1}{2}$.

Data collection: *SMART* (Bruker, 2001); cell refinement: *SAINTE* (Bruker, 2001); data reduction: *SAINTE*; program(s) used to solve structure: *SHELXS97* (Sheldrick, 2008); program(s) used to refine structure: *SHELXL97* (Sheldrick, 2008); molecular graphics: *SHELXTL* (Sheldrick, 2008); software used to prepare material for publication: *SHELXTL*.

This work is supported by the National Medical Research Council, Singapore (NMRC/NIG/0020/2008) and the National University of Singapore (R-148-050-091-101/133).

Supplementary data and figures for this paper are available from the IUCr electronic archives (Reference: SI2181).

References

- Bernstein, J., Davis, R. E., Shimoni, L. & Chang, N.-L. (1995). *Angew. Chem. Int. Ed. Engl.* **34**, 1555–1573.
- Bruker (2001). *SMART* and *SAINT*. Bruker AXS GmbH, Karlsruhe, Germany.
- Dolzhenko, A. V., Pastorin, G., Dolzhenko, A. V. & Chui, W. K. (2009). *Tetrahedron Lett.* In the press.
- Gerbelev, N. V., Simonov, Y. A., Arion, V. B., Gredinaru, D. I., Zavodnik, V. E., Indrichan, K. M. & Malinovskii, T. I. (1991). *Russ. J. Inorg. Chem.* **36**, 52–54.
- Gradinaru, J. I., Simonov, Y. A., Arion, V. B., Bourosh, P. N., Popovici, M. A., Bel'skii, V. K. & Gerbelev, N. V. (2001). *Inorg. Chim. Acta*, **313**, 30–36.
- Leovac, V. M., Češljević, V. I., Gerbelev, N. V., Simonov, Y. A., Dvorkin, A. A. & Arion, V. B. (1993). *Transition Met. Chem.* **18**, 309–311.
- Sheldrick, G. M. (2001). *SADABS*. University of Göttingen, Germany.
- Sheldrick, G. M. (2008). *Acta Cryst.* **A64**, 112–122.
- Simonov, Y. A., Bourosh, P. N., Arion, V. B., Mazus, M. D. & Gerbelev, N. V. (1988). *Kristallografiya*, **33**, 1535–1537.

supplementary materials

Acta Cryst. (2009). E65, o1578-o1579 [doi:10.1107/S1600536809022132]

(4Z,6Z,12Z,14Z)-2,10-Dimethyl-2,8,10,16-tetrahydrodipyrzolo[3,4-*e*:3',4'-*f*][1,2,4,8,9,11]hexaazacyclotetradecine-4,12-diamine

A. V. Dolzhenko, G. Pastorin, A. V. Dolzhenko, G. K. Tan and L. L. Koh

Comment

Macrocyclic compounds, various classes of which have been known for a long time, attract significant attention of the chemists' community due to their unique physico-chemical properties. Several studies on the synthesis and the crystal structure of the planar 1,2,4,8,9,11-hexaaza[14]annulene macrocyclic system have appeared (Gradinaru *et al.*, 2001; Gerbeleu *et al.*, 1991; Leovac *et al.*, 1993; Simonov *et al.*, 1988). However, all of the compounds were prepared and investigated as nickel complexes. Herein, we report the first crystal structure of the ligand with the 1,2,4,8,9,11-hexaaza[14]annulene macrocyclic ring. The title compound is a centrosymmetric molecule, which comprises the hexaaza[14]annulene macrocyclic ring fused with two pyrazole rings. The macrocyclic ring is essentially planar with an r.m.s. deviation of 0.0381 Å. The most outlying from the least-squares plane of the macrocyclic ring are atoms C6 (C6A) and N4 (N4A) with deviations of 0.0654 (17) Å and 0.0577 (18) Å, respectively. The C6—N5 bond distance (1.340 (3) Å) indicates delocalization of the electron pair of the N5 atom, though the amino group adopts a slightly pyramidal geometry with 0.084 (15) Å deviation of N5 from the C6/H5A/H5B mean plane. The strong intramolecular N—H···N hydrogen bonds arranged in a $S^2_2(10)$ graph-set motif (Bernstein *et al.*, 1995) are present inside the macrocyclic ring.

In the crystal, the amino groups act as donors for intermolecular N—H···N interaction with the nitrogen atoms N1 (N1A) and N6 (N6A), thereby forming two types of extended chains. The nitrogen atoms N1 (N1A) are acceptors in $C(6)$ chains running parallel to the [101] direction, while the nitrogen atoms N6 (N6A) are acceptors in $C(5)$ chains oriented in the [011] direction. Together, these hydrogen bonds form a centrosymmetric $R^4_4(22)$ motif. The crystal packing is also stabilized by weak intermolecular C—H···N hydrogen bonds, formed between C3—H (C3A—H) of the pyrazole rings and nitrogen atoms N6 (N6A) of the macrocyclic ring, running in the [10 $\bar{1}$] direction.

Experimental

The title compound was synthesized according to Dolzhenko *et al.* (2009). Single crystals suitable for crystallographic analysis were grown by recrystallization from methanol.

Refinement

All the H atoms attached to the carbon atoms were constrained in a riding motion approximation [0.94 Å for C_{aryl}—H and 0.97 Å for methyl groups; $U_{\text{iso}}(\text{H}) = 1.2U_{\text{eq}}(\text{C}_{\text{aryl}})$ and $U_{\text{iso}}(\text{H}) = 1.5U_{\text{eq}}(\text{C}_{\text{methyl}})$] while the N-bound H atoms were located in a difference map and refined freely.

Figures

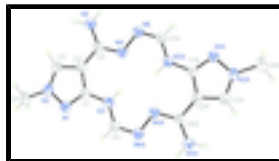


Fig. 1. The molecular structure of the title compound with the atomic numbering scheme. Displacement ellipsoids are drawn at the 50% probability level.

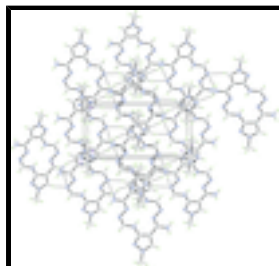


Fig. 2. Molecular parking in the crystal, viewed along the *b* axis.

(4Z,6Z,12Z,14Z)-2,10-Dimethyl-2,8,10,16-tetrahydrodipyrzolo[3,4-e:3',4'-l][1,2,4,8,9,11]hexaazacyclotetradecine-4,12-diamine

Crystal data

$C_{12}H_{16}N_{12}$

$M_r = 328.37$

Monoclinic, $P2_1/n$

Hall symbol: $-P\ 2_1/n$

$a = 7.1470$ (6) Å

$b = 7.5593$ (7) Å

$c = 13.9174$ (13) Å

$\beta = 91.866$ (3)°

$V = 751.51$ (12) Å³

$Z = 2$

$F_{000} = 344$

$D_x = 1.451$ Mg m⁻³

Melting point: 537 K

Mo *K* α radiation

$\lambda = 0.71073$ Å

Cell parameters from 734 reflections

$\theta = 2.9$ – 21.6 °

$\mu = 0.10$ mm⁻¹

$T = 223$ K

Block, colourless

$0.22 \times 0.08 \times 0.06$ mm

Data collection

Bruker SMART APEX CCD diffractometer

Radiation source: fine-focus sealed tube

Monochromator: graphite

$T = 223$ K

φ and ω scans

Absorption correction: multi-scan (SADABS; Sheldrick, 2001)

$T_{\min} = 0.978$, $T_{\max} = 0.994$

5126 measured reflections

1721 independent reflections

1272 reflections with $I > 2\sigma(I)$

$R_{\text{int}} = 0.037$

$\theta_{\text{max}} = 27.5$ °

$\theta_{\text{min}} = 2.9$ °

$h = -9$ → 8

$k = -8$ → 9

$l = -18$ → 15

Refinement

| | |
|--|--|
| Refinement on F^2 | Secondary atom site location: difference Fourier map |
| Least-squares matrix: full | Hydrogen site location: inferred from neighbouring sites |
| $R[F^2 > 2\sigma(F^2)] = 0.062$ | H atoms treated by a mixture of independent and constrained refinement |
| $wR(F^2) = 0.151$ | $w = 1/[\sigma^2(F_o^2) + (0.0676P)^2 + 0.2208P]$ |
| $S = 1.06$ | where $P = (F_o^2 + 2F_c^2)/3$ |
| 1721 reflections | $(\Delta/\sigma)_{\max} = 0.002$ |
| 122 parameters | $\Delta\rho_{\max} = 0.26 \text{ e } \text{\AA}^{-3}$ |
| Primary atom site location: structure-invariant direct methods | $\Delta\rho_{\min} = -0.17 \text{ e } \text{\AA}^{-3}$ |
| | Extinction correction: none |

Special details

Geometry. All e.s.d.'s (except the e.s.d. in the dihedral angle between two l.s. planes) are estimated using the full covariance matrix. The cell e.s.d.'s are taken into account individually in the estimation of e.s.d.'s in distances, angles and torsion angles; correlations between e.s.d.'s in cell parameters are only used when they are defined by crystal symmetry. An approximate (isotropic) treatment of cell e.s.d.'s is used for estimating e.s.d.'s involving l.s. planes.

Refinement. Refinement of F^2 against ALL reflections. The weighted R -factor wR and goodness of fit S are based on F^2 , conventional R -factors R are based on F , with F set to zero for negative F^2 . The threshold expression of $F^2 > \sigma(F^2)$ is used only for calculating R -factors(gt) *etc.* and is not relevant to the choice of reflections for refinement. R -factors based on F^2 are statistically about twice as large as those based on F , and R -factors based on ALL data will be even larger.

Fractional atomic coordinates and isotropic or equivalent isotropic displacement parameters (\AA^2)

| | x | y | z | $U_{\text{iso}}^*/U_{\text{eq}}$ |
|-----|-------------|------------|--------------|----------------------------------|
| N1 | 0.5186 (2) | 0.7646 (2) | 0.56112 (13) | 0.0318 (5) |
| N2 | 0.6151 (3) | 0.6882 (2) | 0.48829 (14) | 0.0331 (5) |
| N3 | 0.2241 (3) | 0.9124 (3) | 0.56302 (13) | 0.0330 (5) |
| H3N | 0.135 (4) | 0.945 (3) | 0.5254 (18) | 0.041 (7)* |
| N4 | 0.0731 (2) | 0.9323 (2) | 0.37750 (13) | 0.0329 (5) |
| N5 | 0.2238 (4) | 0.7748 (3) | 0.25680 (16) | 0.0483 (6) |
| H5A | 0.125 (4) | 0.790 (4) | 0.218 (2) | 0.050 (8)* |
| H5B | 0.312 (4) | 0.702 (3) | 0.2455 (19) | 0.040 (7)* |
| N6 | -0.0650 (3) | 0.9742 (3) | 0.30609 (14) | 0.0417 (5) |
| C1 | 0.3648 (3) | 0.8253 (3) | 0.51677 (15) | 0.0286 (5) |
| C2 | 0.3588 (3) | 0.7909 (3) | 0.41682 (15) | 0.0291 (5) |
| C3 | 0.5250 (3) | 0.7009 (3) | 0.40344 (16) | 0.0331 (5) |
| H3 | 0.5666 | 0.6566 | 0.3448 | 0.040* |
| C4 | 0.8014 (3) | 0.6185 (3) | 0.50829 (19) | 0.0416 (6) |
| H4A | 0.8443 | 0.5566 | 0.4521 | 0.062* |
| H4B | 0.7981 | 0.5372 | 0.5621 | 0.062* |
| H4C | 0.8863 | 0.7151 | 0.5240 | 0.062* |

supplementary materials

| | | | | |
|----|------------|------------|--------------|------------|
| C5 | 0.2062 (3) | 0.9460 (3) | 0.65708 (17) | 0.0381 (6) |
| H5 | 0.3035 | 0.9088 | 0.6994 | 0.046* |
| C6 | 0.2100 (3) | 0.8348 (3) | 0.34691 (15) | 0.0305 (5) |

Atomic displacement parameters (\AA^2)

| | U^{11} | U^{22} | U^{33} | U^{12} | U^{13} | U^{23} |
|----|-------------|-------------|-------------|--------------|--------------|--------------|
| N1 | 0.0292 (10) | 0.0340 (10) | 0.0322 (10) | -0.0006 (8) | 0.0010 (8) | 0.0006 (8) |
| N2 | 0.0271 (10) | 0.0347 (10) | 0.0378 (11) | 0.0028 (8) | 0.0043 (8) | 0.0001 (8) |
| N3 | 0.0293 (10) | 0.0434 (11) | 0.0264 (10) | 0.0052 (9) | -0.0009 (8) | -0.0012 (9) |
| N4 | 0.0288 (10) | 0.0427 (10) | 0.0272 (9) | 0.0007 (8) | 0.0014 (8) | 0.0031 (8) |
| N5 | 0.0422 (14) | 0.0694 (16) | 0.0330 (12) | 0.0178 (12) | -0.0036 (10) | -0.0110 (11) |
| N6 | 0.0367 (11) | 0.0604 (13) | 0.0279 (10) | 0.0100 (10) | 0.0002 (9) | 0.0016 (10) |
| C1 | 0.0263 (11) | 0.0294 (10) | 0.0301 (11) | -0.0045 (9) | 0.0009 (9) | 0.0016 (9) |
| C2 | 0.0294 (11) | 0.0293 (10) | 0.0288 (11) | -0.0029 (9) | 0.0045 (9) | -0.0006 (9) |
| C3 | 0.0332 (12) | 0.0340 (11) | 0.0324 (12) | -0.0010 (10) | 0.0064 (10) | -0.0010 (10) |
| C4 | 0.0289 (12) | 0.0424 (13) | 0.0536 (15) | 0.0047 (10) | 0.0023 (11) | 0.0050 (12) |
| C5 | 0.0341 (13) | 0.0511 (14) | 0.0291 (12) | 0.0049 (11) | -0.0014 (10) | 0.0035 (11) |
| C6 | 0.0304 (12) | 0.0343 (11) | 0.0269 (11) | -0.0038 (9) | 0.0035 (9) | 0.0003 (9) |

Geometric parameters (\AA , $^\circ$)

| | | | |
|------------------------|-------------|------------------------|-------------|
| N1—C1 | 1.325 (3) | N5—H5B | 0.85 (3) |
| N1—N2 | 1.372 (3) | N6—C5 ⁱ | 1.295 (3) |
| N2—C3 | 1.330 (3) | C1—C2 | 1.414 (3) |
| N2—C4 | 1.450 (3) | C2—C3 | 1.387 (3) |
| N3—C5 | 1.344 (3) | C2—C6 | 1.456 (3) |
| N3—C1 | 1.379 (3) | C3—H3 | 0.9400 |
| N3—H3N | 0.85 (3) | C4—H4A | 0.9700 |
| N4—C6 | 1.307 (3) | C4—H4B | 0.9700 |
| N4—N6 | 1.413 (3) | C4—H4C | 0.9700 |
| N5—C6 | 1.340 (3) | C5—N6 ⁱ | 1.295 (3) |
| N5—H5A | 0.88 (3) | C5—H5 | 0.9400 |
| C1—N1—N2 | 103.35 (18) | C1—C2—C6 | 127.84 (19) |
| C3—N2—N1 | 112.65 (18) | N2—C3—C2 | 108.0 (2) |
| C3—N2—C4 | 127.7 (2) | N2—C3—H3 | 126.0 |
| N1—N2—C4 | 119.45 (19) | C2—C3—H3 | 126.0 |
| C5—N3—C1 | 129.7 (2) | N2—C4—H4A | 109.5 |
| C5—N3—H3N | 116.9 (17) | N2—C4—H4B | 109.5 |
| C1—N3—H3N | 113.3 (17) | H4A—C4—H4B | 109.5 |
| C6—N4—N6 | 114.22 (18) | N2—C4—H4C | 109.5 |
| C6—N5—H5A | 116.4 (17) | H4A—C4—H4C | 109.5 |
| C6—N5—H5B | 117.8 (18) | H4B—C4—H4C | 109.5 |
| H5A—N5—H5B | 124 (2) | N6 ⁱ —C5—N3 | 125.0 (2) |
| C5 ⁱ —N6—N4 | 111.17 (19) | N6 ⁱ —C5—H5 | 117.5 |
| N1—C1—N3 | 123.7 (2) | N3—C5—H5 | 117.5 |
| N1—C1—C2 | 113.13 (19) | N4—C6—N5 | 125.0 (2) |
| N3—C1—C2 | 123.2 (2) | N4—C6—C2 | 116.68 (19) |

| | | | |
|----------|-------------|----------|-----------|
| C3—C2—C1 | 102.91 (19) | N5—C6—C2 | 118.3 (2) |
| C3—C2—C6 | 129.2 (2) | | |

Symmetry codes: (i) $-x, -y+2, -z+1$.

Hydrogen-bond geometry (Å, °)

| <i>D</i> —H \cdots <i>A</i> | <i>D</i> —H | H \cdots <i>A</i> | <i>D</i> \cdots <i>A</i> | <i>D</i> —H \cdots <i>A</i> |
|-----------------------------------|-------------|---------------------|----------------------------|-------------------------------|
| N3—H3N \cdots N4 | 0.85 (3) | 2.09 (3) | 2.770 (3) | 136 (2) |
| N5—H5A \cdots N1 ⁱⁱ | 0.88 (3) | 2.33 (3) | 3.065 (3) | 141 (2) |
| N5—H5B \cdots N6 ⁱⁱⁱ | 0.85 (3) | 2.61 (3) | 3.466 (3) | 174 (2) |
| C3—H3 \cdots N6 ⁱⁱⁱ | 0.94 | 2.51 | 3.402 (3) | 158 |

Symmetry codes: (ii) $x-1/2, -y+3/2, z-1/2$; (iii) $-x+1/2, y-1/2, -z+1/2$.

Fig. 1

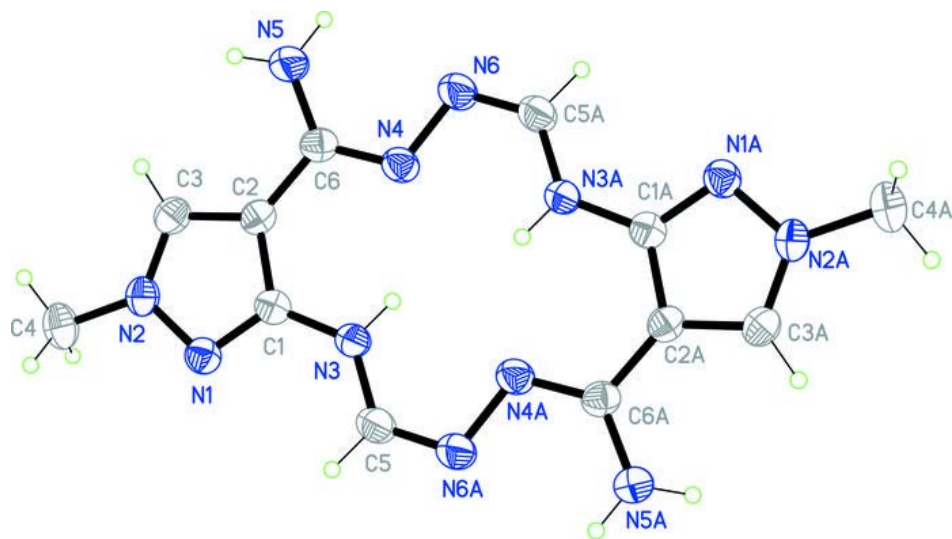


Fig. 2

