

Diagnostic value of SPECT, PET and PET/CT in the diagnosis of coronary artery disease: A systematic review

Al Moudi M¹, Sun Z^{*1}, Lenzo N²

1 Discipline of Medical Imaging, Curtin University of Technology, Perth, Western Australia, Australia

2 Department of Nuclear Medicine, Fremantle Hospital, Perth, Western Australia, Australia

Received 18 June 2010; received in revised form 5 October 2010; accepted 9 October 2010

ABSTRACT

Purpose: The purpose of the study was to investigate the diagnostic value of SPECT, PET and PET/CT in the diagnosis of coronary artery disease, based on a systematic review.

Material and Methods: A search of PubMed/Medline and Scencedirect databases in the English-language literature published over the last 24 years was performed. Only studies with at least 10 patients comparing SPECT, PET or combined PET/CT with invasive coronary angiography in the diagnosis of coronary artery disease (50% stenosis) were included for analysis. Sensitivities and specificities estimates pooled across studies were analysed using a Chi-square test.

Results: Twenty-five studies met the selection criteria and were included for the analysis. Ten studies were performed with SPECT alone; while another six studies were performed with PET alone. Five studies were carried out with both PET and SPECT modalities, and the remaining four studies were investigated with integrated PET-CT. The mean value of sensitivity, specificity and accuracy of these imaging modalities for the diagnosis of coronary artery disease was 82% (95%CI: 76 to 88), 76% (95%CI: 70 to 82) and 83% (95%CI: 77 to 89) for SPECT; 91% (95%CI: 85 to 97), 89% (95%CI: 83 to 95) and 89% (95%CI: 83 to 95) for PET; and 85% (95%CI: 79 to 90), 83% (95%CI: 77 to 89) and 88% (95%CI: 82 to 94) for PET/CT, respectively. The diagnostic accuracy of these imaging modalities was dependent on the radiotracers used in these studies, with ammonia resulting in the highest diagnostic value.

Conclusion: Our review shows that PET has high diagnostic value for diagnosing coronary artery disease, and this indicates that it is a valuable technique for both detection and prediction of coronary artery disease. © 2011 Biomedical Imaging and Intervention Journal. All rights reserved.

Keywords: Coronary artery disease, single photon emission computed tomography, positron emission tomography, computed tomography, diagnostic value

*Corresponding author. Address: Discipline of Medical Imaging, Department of Imaging and Applied Physics, Curtin University of Technology, GPO Box, U1987, Perth, Western Australia 6845, Australia. Tel.: +61-8-9266 7509; Fax: +61-8-9266 2377; E-mail: z.sun@curtin.edu.au (Zhonghua Sun).

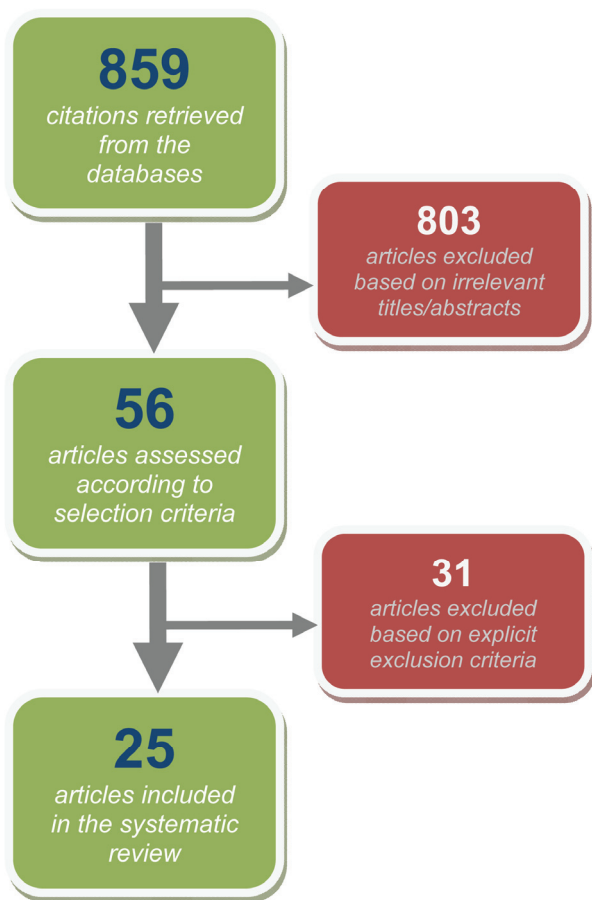


Figure 1 Flow chart shows the searching strategy of eligible references

INTRODUCTION

Coronary artery disease (CAD) remains the leading cause of mortality and morbidity in Western countries [1]. Invasive coronary angiography is currently the gold standard for diagnosis and treatment of CAD; however, it is an invasive procedure associated with risks and complications [2]. Moreover, it is reported that around 20% to 40% of all diagnostic invasive coronary angiography procedures were performed for diagnostic purposes without any interventional procedures being applied [3-5]. Thus, investigation of less invasive imaging modalities is important for reducing or avoiding the use of invasive coronary angiography examinations [6].

Currently, multislice computed tomography (CT) angiography is widely used in clinical practice for the diagnosis of CAD, and its diagnostic accuracy has been significantly enhanced with the recent development of 64-, 256- and 320-slice scanners [7-10]. Studies have shown that multislice CT angiography can be used as a reliable alternative to invasive coronary angiography in

selected patients, due to its high sensitivity and specificity [7-10].

Myocardial perfusion imaging with SPECT is a widely established method for non-invasive evaluation of coronary artery stenosis [11]. However, the most important applications of SPECT are in the diagnosis of CAD, prediction of disease prognosis, selection of patients for revascularisation and assessment of acute coronary syndromes. Moreover, SPECT holds special value in some particular patient subgroups [12, 13]. Generally speaking, the sensitivity of stress SPECT for detecting angiographically-defined CAD is consistently above 70%, but in the better-designed studies, it is within the range of 85-90% [14, 15].

Positron emission tomography (PET) has contributed significantly to advancing our understanding of heart physiology and pathophysiology for more than 25 years. The diagnostic accuracy of myocardial perfusion by PET in the assessment of CAD has been reported to be superior to SPECT [16-17]. PET with rest-stress myocardial perfusion is regarded as an exact imaging modality for diagnosing and managing patients with CAD [17]. Moreover, the combined modality of PET/CT further increases the diagnostic accuracy in CAD [13-17].

Despite promising results reported in the literature [18, 19], the diagnostic value of SPECT and PET to detect CAD has not been well established. This is mainly due to the fact that the diagnostic accuracy reported by these studies is variable and the radiopharmaceuticals used in these studies are different. Thus, the purpose of our study was to investigate the diagnostic value of SPECT, PET and PET/CT when compared to invasive coronary angiography for detection of CAD, based on a systematic review of the current literature.

MATERIALS AND METHODS

A search of the English-language literature was performed using two main databases, PubMed/Medline and ScienceDirect. The search included articles published between 1985 and 2009 on the topics of SPECT, PET and PET/CT in CAD. The research was limited to peer-reviewed articles on human subjects and studies published in the English language. The keywords used for the search were “Positron Emission Tomography”, “Single Photon Emission Computed Tomography”, “integrated Positron Emission Tomography and Computed Tomography”, “Coronary Artery Disease”, “Myocardial perfusion”, “Nuclear Medicine Imaging in cardiac disease”. The reference lists for studies matching these criteria were also reviewed to identify additional articles which were not found through the initial search. The last search was performed in September 2010 to ensure inclusion of all recent publications in the analysis.

Articles that met the following criteria were included for analysis: SPECT, PET, or PET/CT studies

were performed in patients who underwent myocardial perfusion imaging (MPI) rest/stress test while invasive coronary angiography was used as the standard of reference; at least ten patients were included in each study; diagnosis of CAD was based on >50% stenosis. The reason >50% stenosis was chosen was because it has become a routine clinical practice to consider coronary stenosis >50% as haemodynamically significant [20-22]. Also, the diagnostic value in terms of sensitivity and specificity was reported in the study. The exclusion criteria included: review articles or case study reports; animal or phantom studies; studies dealing with myocardial perfusion without addressing the diagnostic accuracy of coronary artery stenosis or occlusion, and studies including patients treated with coronary stents or bypass grafts.

Two reviewers checked the references independently and the following information was extracted from each study: year of publication; number of participants in the study; prevalence of patients with suspected or confirmed CAD; mean age; percentage of male patients affected; type of radiotracer used in each study; rest and stress imaging protocols; diagnostic value of SPECT, PET and PET/CT in terms of sensitivity and specificity; and the accuracy of SPECT, PET and PET/CT for detection of CAD. The main findings were summarised in terms of the extent to which studies were reported to have shown the value of using SPECT, PET and PET-CT to diagnose CAD towards improving patient management and cost-effectiveness.

All of the statistical analyses were undertaken using SPSS software version 17.0 (SPSS Inc., Chicago, ILL). Each of the study estimates for sensitivity and specificity were independently combined across studies using one sample test. Comparison was performed by Chi Square test using n-1 degree of freedom to test if there are any significant differences between different imaging modalities (SPECT vs PET, SPECT vs PET/CT, PET vs PET/CT). Statistical hypotheses (2-tailed) were tested at the 5% level of significance.

RESULTS

Twenty-five studies (with 25 comparisons) met the selection criteria and were included in the analysis [20-44]. Ten of these studies were performed with SPECT alone [20-25, 40-42, 44], while six of the studies were performed with PET alone [31-36]. Five studies were carried out with both PET and SPECT modalities [26-30] and the remaining four studies were investigated with integrated PET/CT [37-39, 43]. The total number of patients included in these studies was 4,114 with 53.5% of the patients suspected of CAD, 72.2 % being male and the mean age of patients being 48-years-old. Table 1 summarises the number of patients, the radiotracers used in each study, and the reported sensitivity, specificity and accuracy with use of SPECT, PET and PET/CT imaging modalities, respectively.

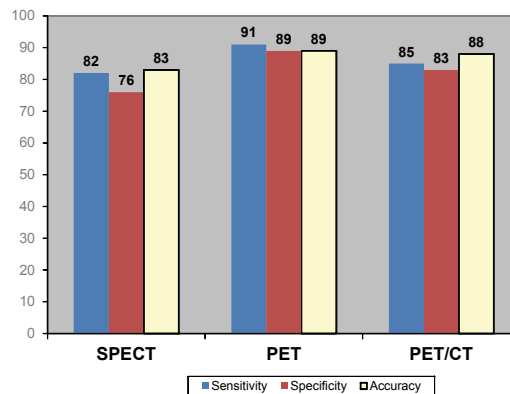


Figure 2 Overall pooled mean diagnostic value of SPECT, PET and PET/CT for detection of coronary artery disease.

The degree of coronary artery stenosis was assessed based on the criterion of >50%, which was determined by invasive coronary angiography in all studies. Of these 20 studies, ⁸²Rubidium was the most commonly-used radiopharmaceutical which was utilised in 10 studies [27-29, 31-34, 37-39]; ^{99m}Tc-Sestamibi was used in seven studies [20-22, 24, 25, 27, 42]; ²⁰¹Thallium was used in four studies [26, 27, 29, 30]; a combination of ²⁰¹Thallium and ^{99m}Tc-Sestamibi was used in one study [23]; ^{99m}Tc-Tetrofosmin was used in three studies [40, 41, 44]; and combinations of ¹³N Ammonia and ⁸²Rubidium were used in the remaining two studies [35, 36].

Analysis of diagnostic value of SPECT in CAD

A total of 2,208 patients were included in 15 SPECT studies based on significant CAD which was determined by visual assessment of coronary angiography. Figure 2 shows the mean sensitivity, specificity and accuracy of SPECT for diagnosis of CAD. As shown in the figure, the diagnostic value of SPECT was moderate when compared to invasive coronary angiography.

Analysis of diagnostic value of PET in CAD

1,376 patients were included in another 11 studies performed with PET tests based on significant CAD which was determined by visual assessment of coronary angiography. Figure 2 shows the mean sensitivity, specificity and accuracy of PET for diagnosis of CAD. As shown in the figure, PET imaging was found to have high diagnostic value in the detection of CAD.

Analysis of diagnostic value of PET/CT in CAD

518 patients were included in four studies performed with PET/CT studies based on significant CAD which was determined by visual assessment of coronary angiography. Again Figure 2 demonstrates that moderate sensitivity, specificity and accuracy of PET/CT were reached for diagnosis of CAD.

Table 1 Study characteristics of SPECT, PET and PET/CT for detection of coronary artery disease.

Authors	Year	Patients (n)	Male (%)	Mean age (yr)	Stenosis	Radiotracer	Stress type	Sensitivity (%)	Specificity (%)	Accuracy (%)
Husmann et al ²⁶	2008	80	85	56	>50%	²⁰¹ Thallium	Dipyridamole	77%	84%	NA
		70	80	54.5		¹³ N ammonia		97%	84%	
Fallahi et al ²⁰	2008	51	85	34	>50%	^{99m} Tc-sestamibi	18 patients exercise and 33 patients dipyridamole	91%	71%	88%
Di Carli et al ³⁷	2007	110	54.5	57.3	>50%	⁸² Rubidium	Adenosine	65%	75%	NA
Cesar et al ³⁸	2007	281	51.6	38.3	>50%	⁸² Rubidium	Adenosine	93%	75%	91%
Sampson et al ³⁹	2007	102	59	37	>50%	⁸² Rubidium	Dipyridamole or dobutamine	93%	83%	85%
Schepis T et al ⁴⁴	2007	77	62	55	>50%	^{99m} Tc-tetrofosmin	Bicycle ergometry	76%	91%	NA
Bateman et al ²⁷	2006	112	52	65	>50%	^{99m} Tc-sestamibi	Dipyridamole	82%	73%	79%
		112	52	66.7		⁸² Rubidium		87%	93%	89%
Namdar et al ⁴³	2005	25	92	62	>50%	¹³ N ammonia	Adenosine	90%	98%	NA
Giorgetti et al ⁴⁰	2004	23	80	40	>50%	^{99m} Tc-tetrofosmin	Nitrates (Intravenous isosorbide dinitrate, 0.2 mg/ml, 10ml/h)	61%	88%	72%
Elhendy et al ²¹	2001	332	77	57	>50%	^{99m} Tc-sestamibi	Upright bicycle ergometry	77%	74%	77%
Leoncini et al ²²	2001	33	93	37	>50%	^{99m} Tc-sestamibi	Dobutamine	85%	55%	NA
Elhendy et al ⁴¹	2000	124	69.5	35	>50%	^{99m} Tc-tetrofosmin	Dobutamine	80%	72%	77%
Nakamura et al ²³	1999	81	80	37	>50%	²⁰¹ Thallium & ^{99m} Tc-sestamibi	Exercise	83%	99%	95%
Levine et al ²⁴	1999	50	76	36	>50%	^{99m} Tc-sestamibi	No stress	86%	55%	85%
Milavetz et al ²⁵	1998	209	77	36.5	>50%	^{99m} Tc-sestamibi	16 patients Dipyridamole, 2 patients dobutamine and 191 patients exercise	95%	73%	88%
Santana-Boado et al ⁴²	1998	702	56	34	>50%	^{99m} Tc-sestamibi	Bicycle ergometry	89%	90%	91%
Williams et al ³¹	1994	287	75	NA	>50%	⁸² Rubidium	Dipyridamole	87%	88%	88%
Simone et al ³²	1992	225	80	NA	>50%	⁸² Rubidium	Dipyridamole	92%	91%	91%
Marwick et al ³³	1992	74	NA	34	>50%	⁸² Rubidium	Treadmill exercise	90%	100%	91%
Grover-McKay et al ³⁴	1992	31	84	34.5	>50%	⁸² Rubidium	Dipyridamole	100%	73%	87%
Fallahi et al ²⁰	2008	51	85	34	>50%	^{99m} Tc-sestamibi	18 patients exercise and 33 patients dipyridamole	91%	71%	88%

Author	Year	Study	Prevalence (%)	Modality	Accuracy (%)	Specificity (%)	Sensitivity (%)
Di Carli et al ³⁷	2007	110	54.5	57.3	>50%	⁸² Rubidium	Adenosine
Cesar et al ³⁸	2007	281	51.6	38.3	>50%	⁸² Rubidium	Adenosine

* NA-not available

Table 2 Mean diagnostic value of SPECT, PET and PET/CT for detection of coronary artery disease by individual coronary branches.

Authors	Radiotracer			Sensitivity (%)			Sensitivity (%)			Specificity (%)		
	SPECT	PET	PET/CT	SPECT	PET	PET/CT	SPECT	PET	PET/CT	SPECT	PET	PET/CT
Bateman et al ¹¹												
>50% stenosis	^{99m} Tc-sestamibi/	^{99m} Tc-sestamibi /		61	79		92	95		75	87	
LAD				33	58		86	93		68	79	
LCx				60	58		87	100		73	78	
RCA												
Tamaki et al ²⁸												
>50% stenosis	²⁰¹ Thallium /	²⁰¹ Thallium /		90	93		89	100		NA	NA	
LAD	¹³ N ammonia	¹³ N ammonia		65	85		93	90				
LCx				79	76		95	86				
RCA												
Cesar et al ³⁶												
>50% stenosis			⁸² Rubidium				70			69		70
LAD							76			86		83
LCx							66			92		77
RCA												
Husmann et al ²⁶												
>50% stenosis	^{99m} Tc-sestamibi	¹³ N ammonia		64	95		76	86		NA	NA	
LAD				80	100		93	80				
LCx				87	100		86	87				
RCA												
Overall												
>50% stenosis				72	89		86	94		69		70
LAD				59	81		91	88		86		83
LCx				75	78		89	91		92		77
RCA												

* NA-not available, LAD-left anterior descending, LCx-left circumflex, RCA-right coronary artery

Table 3 Mean diagnostic value of nuclear medicine imaging with use of different radiotracers.

Radiotracer	Patients (n)	Male (%)	Mean age (yr)	Stenosis	Sensitivity (%)	Specificity (%)	Accuracy (%)
²⁰¹ Tlthallium	414	74.6	42.3	>50%	80 (95% CI: 74 to 86)	77 (95% CI: 71 to 83)	78 (95% CI: 72 to 84)
^{99m} Tc-sestamibi	760	76.6	45.7	>50%	86 (95% CI: 80 to 92)	66 (95% CI: 60 to 72)	83 (95% CI: 77 to 89)
^{99m} Tc-tetrofosmin	224	75	37.5	>50%	74 (95% CI: 64 to 76)	86 (95% CI: 74 to 86)	75 (95% CI: 68 to 80)
²⁰¹ Tlthallium &							
^{99m} Tc-sestamibi	81	80	37	>50%	83 (95% CI: 77 to 89)	99 (95% CI: 93 to 100)	95 (95% CI: 90 to 100)
¹⁵ N ammonia	121	71	42.5	>50%	92 (95% CI: 86 to 98)	86 (95% CI: 80 to 92)	90 (95% CI: 84 to 96)
⁸² Rubidium	985	71	42.5	>50%	90 (95% CI: 84 to 96)	88 (95% CI: 82 to 94)	92 (95% CI: 86 to 98)
⁸² Rubidium and							
¹³ N ammonia	243	74	NA	>50%	89 (95% CI: 83 to 95)	97 (95% CI: 91 to 100)	91 (95% CI: 75 to 87)

* NA-not available

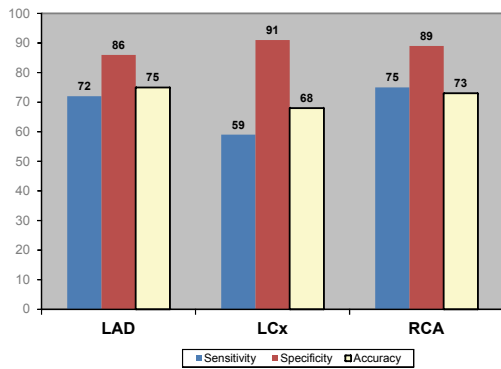


Figure 3 Pooled diagnostic value of SPECT for detection of coronary artery disease based on individual coronary artery assessment.

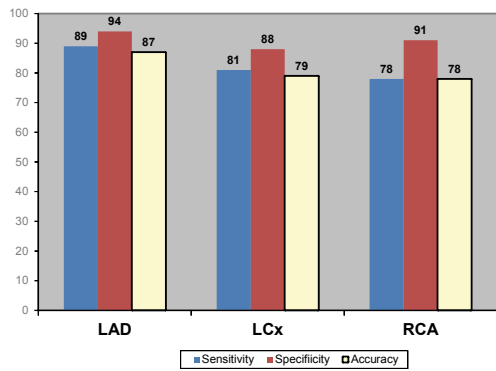


Figure 4 Pooled diagnostic value of PET for detection of coronary artery disease based on individual coronary artery assessment.

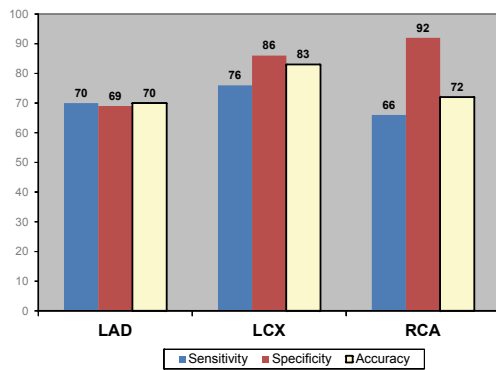


Figure 5 Pooled diagnostic value of PET/CT for detection of coronary artery disease based on individual coronary artery assessment.

Comparison of SPECT, PET and PET/CT

There is a significant difference in sensitivity, specificity and accuracy between PET and SPECT, PET and PET/CT, SPECT and PET/CT for the diagnosis of CAD ($p < 0.05$), with PET demonstrating the highest

diagnostic value among these three imaging modalities as shown in Figure 2.

Analysis of diagnostic value for assessment of individual coronary artery disease

Table 2 demonstrates the diagnostic value of SPECT, PET and PET/CT in three studies with five comparisons based on analysis of three main coronary arteries.

Figures 3 to 5 demonstrate the overall results of sensitivity, specificity and accuracy analysed with three different nuclear medicine modalities at left anterior descending (LAD), left circumflex (LCx) and right coronary artery (RCA). As shown in the figures, PET has the highest diagnostic value among the 3 imaging modalities for diagnosis of CAD.

Analysis of effects of different Radiotracers on diagnostic value

Since different types of radiotracers were used in these 20 studies, analyses of the diagnostic value of variable radiotracers for detection of CAD were investigated. Table 3 shows the radiotracers used in these studies and their corresponding diagnostic value. As demonstrated in the table, using ammonia as a radiotracer produced the highest diagnostic value for detection of CAD.

Figure 6 shows the differences in sensitivity and specificity between both ^{201}Tl and $^{99\text{m}}\text{Tc}$ -sestamibi for the diagnosis of CAD ($p < 0.05$), and also significant differences in the specificity and accuracy between both ^{201}Tl and $^{99\text{m}}\text{Tc}$ -sestamibi and individual radiotracers for the diagnosis of CAD ($p < 0.05$).

Significant differences in sensitivity and accuracy was found between $^{13\text{N}}$ ammonia, $^{82\text{Rb}}$ and both $^{13\text{N}}$ ammonia with $^{82\text{Rb}}$ for the diagnosis of CAD ($p < 0.05$) as shown in Figure 6. Significant differences were found in the sensitivity and specificity between use of combined radiotracers ($^{13\text{N}}$ ammonia and $^{82\text{Rb}}$, ^{201}Tl and $^{99\text{m}}\text{Tc}$ -sestamibi) and use of individual radiotracers alone for the diagnosis of CAD ($p < 0.05$).

DISCUSSION

This systematic review presents three significant findings which are considered to be important from a clinical perspective. First, the diagnostic value of SPECT and PET/CT in the detection of CAD is moderate when compared to invasive coronary angiography. Second, PET has higher sensitivity and specificity than SPECT or PET/CT for detection of CAD, indicating the increasing diagnostic accuracy of PET in cardiac imaging. Lastly, there are significant differences when different radiotracers are used for the diagnosis of CAD, with the use of combined radiotracers resulting in improved diagnostic value.

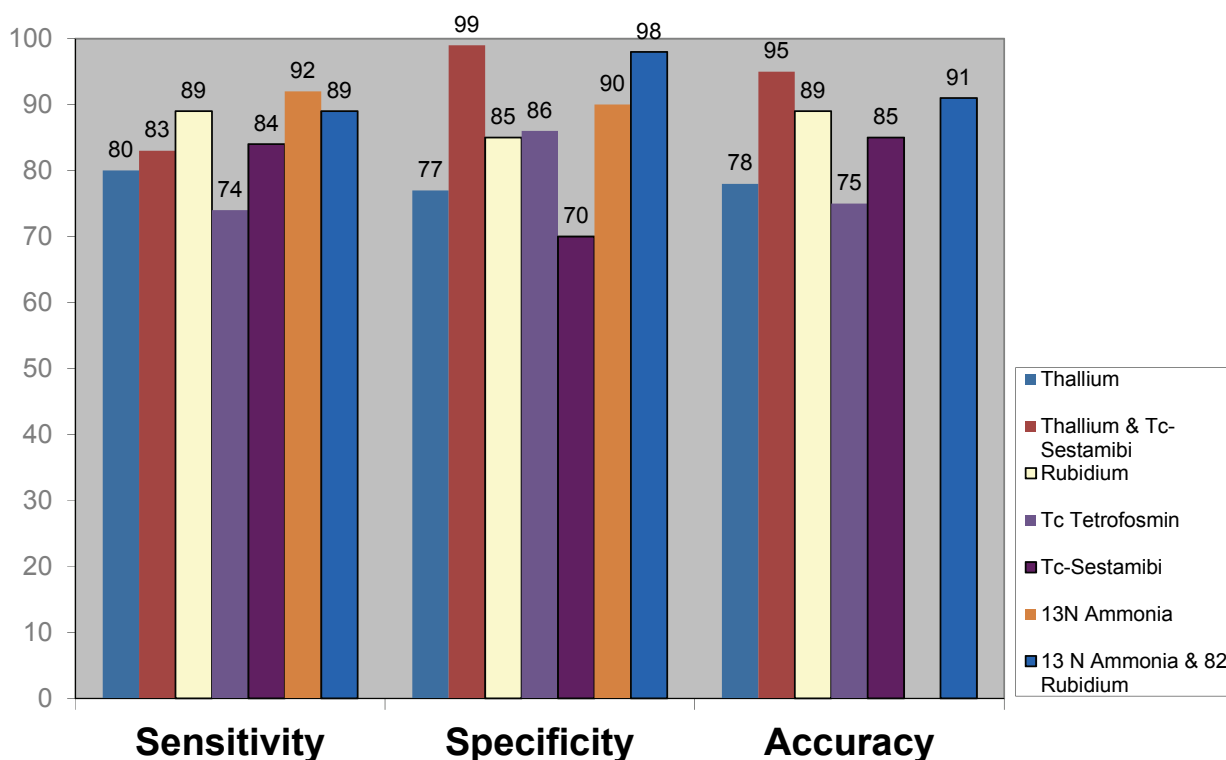


Figure 6 Pooled diagnostic value of nuclear medicine imaging with use of variable radiotracers for detection of coronary artery disease.

SPECT has been used as a routine technique in clinical practice for myocardial perfusion imaging for decades [29]. Previous studies have shown that the diagnostic value of SPECT in cardiac imaging is variable, ranging from low to moderate [30]. Di Carli et al. [45] compared three studies using SPECT with PET, looking particularly at the diagnostic accuracy for detection of CAD. Only the sensitivity and specificity were provided in their study while the analysis of diagnostic accuracy was not identified. This analysis confirms their results to a greater extent, as the mean sensitivity, specificity and accuracy of SPECT for detection of CAD are moderate. This indicates that SPECT has not reached the diagnostic accuracy to be considered as a reliable technique for assessment of CAD.

PET has been used more recently in cardiac imaging, and early results look promising [46]. PET offers potential advantages in a clinical practice over myocardial perfusion scintigraphy [47]. PET is able to assess myocardial blood flow and is superior in detecting multivessel disease [48]. Our analysis identifies PET as having the highest diagnostic value for CAD among the three different nuclear imaging modalities analysed.

Husmann et al. [27] compared SPECT and PET in respect to diagnostic accuracy of myocardial perfusion imaging. Only the sensitivity and specificity were reported in their study, while the diagnostic accuracy was not available. In contrast, the sensitivity, specificity and accuracy of PET for detection of CAD were analysed in our report. This review provides a comprehensive analysis of the diagnostic value of these nuclear modalities, including sensitivity, specificity and accuracy. Thus, it is believed that the analysis offers additional and valuable diagnostic information, as compared to the previous reports in the literature.

Recently, cardiac imaging has been further enhanced by the use of integrated PET/CT, a combined modality which provides the considerable benefit of anatomical and physiologic assessment in patients with CAD [37, 38]. PET/CT allows precise detection and localisation of CAD [39]. CT coronary angiography provides superior anatomical details but lacks the functional information of cardiac perfusion. The latest refinements in CT technology, including multidetector CT with faster gantry rotations, and dual-source devices, have advanced CT angiography as a promising

alternative to conventional angiography in the diagnosis of CAD selected patients [49]. Recent studies have shown that 64-slice CTA has high sensitivity (73%-100%) and specificity (90%-90%) in the detection of CAD [50-52]. PET offers evidence of sub-clinical coronary atherosclerosis as it is superior in demonstrating metabolic activities, but its spatial resolution is limited when demonstrating coronary anatomical structures [48]. Thus, combined PET/CT overcomes the limitations of each individual modality while maximising the advantages of both PET and CT in cardiac imaging [45-47].

However, the analysis of integrated PET/CT for detection of CAD was not as good as initially expected since PET/CT was shown to have moderate sensitivity, specificity and accuracy. This may be due to the selection of patients with different risk factors in the studies analysed. Therefore, results of this analysis should be interpreted with caution. PET/CT may show improved diagnostic accuracy in other areas, such as tumour imaging, but not in the diagnosis of CAD, based on this analysis.

This analysis also involves a comparison of radiotracers used in SPECT and PET imaging which includes seven different types of radioisotopes, namely ^{201}Tl , $^{99\text{m}}\text{Tc}$ -tetrofosmin, $^{99\text{m}}\text{Tc}$ -Sestamibi, a combination of ^{201}Tl and $^{99\text{m}}\text{Tc}$ -Sestamibi, ^{13}N Ammonia, ^{82}Rb , and a combination of ^{13}N Ammonia and ^{82}Rb . The comparative analysis indicates significant benefits of using ^{13}N ammonia for MPI to detect CAD by PET, leading to the highest sensitivity and accuracy. Both ^{13}N ammonia and ^{82}Rb have significantly high specificity in MPI by PET. PET imaging with use of ^{13}N ammonia, ^{82}Rb , and a combination of ^{13}N ammonia and ^{82}Rb for diagnosis of CAD, has been found to result in significant differences in sensitivity, specificity and accuracy than those using ^{201}Tl , $^{99\text{m}}\text{Tc}$ -sestamibi, and a combination of ^{201}Tl and $^{99\text{m}}\text{Tc}$ -sestamibi by SPECT imaging. This is consistent with results reported by other studies. Go and colleagues [29] compared PET and SPECT in 202 patients. Their results showed there was no significant difference between PET imaging with use of ^{82}Rb and SPECT imaging with ^{201}Tl . Tamaki and colleagues [30] compared ^{13}N ammonia PET with ^{201}Tl SPECT and reported similar findings. Hence, this analysis confirms that ^{13}N ammonia PET and ^{201}Tl SPECT provide high diagnostic value for detection of CAD.

In addition, the analysis of individual coronary arteries demonstrates the superiority of PET over the other two modalities, but a significant difference in diagnostic value was only found between PET and SPECT, PET/CT in LAD. PET/CT was found to be significantly higher than PET in the assessment of RCA in terms of diagnostic accuracy. However, only a few studies presented the analysis of individual coronary arteries, thus a robust conclusion cannot be drawn based on the current analyses.

There were some limitations identified in this study which need to be addressed. First, most of the studies did not provide detailed numbers of true positive, true negative cases, thus this prevented the authors from performing an accurate analysis of the diagnostic value of these modalities. Second, studies currently under review or submitted for publication were not included, although the authors did try to cover as many articles as possible in the search. Third, diagnostic value reported in each study was dependent on the radiotracers used, thus results should be interpreted with caution. Fourth, there exists variability among readers to interpret the angiographic images in terms of the degree of stenosis, for example, 50% or more stenosis [53]. Last, this analysis was restricted to English language literature, which could introduce biased opinion to the results. PET/CT has more potential advantages because it integrated two modalities but not many studies were found.

CONCLUSION

This analysis shows that PET has higher sensitivity, specificity and accuracy for detection of CAD than SPECT and PET/CT. PET can be used as a reliable, less invasive modality for functional analysis of patients suspected of CAD. Further studies comprising a large sample size are needed to verify these results.

REFERENCES

1. Thom T. Heart disease and stroke statistics-2006 update a report from the American Heart Association Statistics Committee and Stroke Statistics Subcommittee. *Circulation* 2006;113(6):e85.
2. Cuocolo A, Acampa W, Imbriaco M, De Luca N, Iovino GO, Salvatore M. The many ways to myocardial perfusion imaging. *Q J Nucl Med Mol Imaging* 2005;49(1):4-18.
3. American Heart Association, American Stroke Association. 2002 Heart and stroke statistics update. Dallas, TX: The American Heart Association, 2002.
4. Noto Jr TJ, Johnson LW, Krone R, et al. Cardiac catheterization 1990: a report of the registry of the Society for Cardiac Angiography and Interventions, (SCA&I). *Cathet Cardiovasc Diagn* 1991; 24: 75-83.
5. Achenbach S, Daniel WG. Noninvasive Coronary Angiography- An Acceptable Alternative? *N Engl J Med* 2001;345(26):1909-1910.
6. Noto TJ Jr, Johnson LW, Krone R, Weaver WF, Clark DA, Kramer JR Jr, et al. Cardiac catheterization 1990: a report of the registry of the Society for Cardiac Angiography and Interventions. (SCA&I). *Cathet Cardiovasc Diagn* 1991; 24: 75-83.
7. Kido T, Kurata A, Higashino H, et al. Cardiac imaging using 256-detector row four-dimensional CT: preliminary clinical report. *Radiat Med* 2007; 25: 38-44.
8. Rybicki F, Otero H, Steigner M, et al. Initial evaluation of coronary images from 320-detector row computed tomography. *Int J Cardiovasc Imaging* 2008; 24: 535-546.
9. Sun Z, Jiang W. Diagnostic value of multislice computed tomography angiography in coronary artery disease: A meta-analysis. *Eur J Radiol* 2006;60(2):79-86.
10. Marwick TH, Shan K, Patel S, Go RT, Lauer MS. Incremental Value of Rubidium-82 Positron Emission Tomography for Prognostic Assessment of Known or Suspected Coronary Artery

- Disease. *Am J Cardiol* 1997;80(7):65-70.
11. Hachamovitch R. Comparison of the short-term survival benefit associated with revascularization compared with medical therapy in patients with no prior coronary artery disease undergoing stress myocardial perfusion single photon emission computed tomography. *Circulation* 2003;107(23):2900-2906.
 12. Hachamovitch R, Berman DS, Shaw LJ, et al. Incremental Prognostic Value of Myocardial Perfusion Single Photon Emission Computed Tomography for the Prediction of Cardiac Death: Differential Stratification for Risk of Cardiac Death and Myocardial Infarction. *Circulation* 1998; 97(6):535-543.
 13. Van der Vaart MG, Meerwaldt R, Slart RHJA, van Dam GM, Tio RA, Zeebregts CJ. Application of PET/SPECT imaging in vascular disease. *Eur J Vasc Endovasc Surg* 2008;35(5):507-513.
 14. Di Carli MF, Hachamovitch R. Should PET replace SPECT for evaluating CAD? The end of the beginning. *J Nucl Cardiol* 2006; 13: 2-7.
 15. Iomka PJ, Le Meunier L, Hayes SW, et al. Comparison of Myocardial Perfusion 82Rb PET Performed with CT- and Transmission CT-Based Attenuation Correction. *J Nucl Med* 2008 12/1;49(12):1992-1998.
 16. Santana CA, Folks RD, Garcia EV, et al. Quantitative 82Rb PET/CT: Development and Validation of Myocardial Perfusion Database. *J Nucl Med* 2007;48: 1122-1128.
 17. Donati OF, Stolzmann P, Desbiolles L, et al. Coronary artery disease: Which degree of coronary artery stenosis is indicative of ischemia? *Eur J Radiol* 2010 (Epub ahead of print).
 18. Oncel D. Detection of significant coronary artery stenosis with 64-section MDCT angiography. *Eur J Radiol* 2007;62: 394-405.
 19. D'Othee BJ, Siebert U, Cury R, Jadvar H, Dunn EJ, Hoffmann U. A systematic review on diagnostic accuracy of CT-based detection of significant coronary artery disease. *Eur J Radiol* 2008;65: 449-461.
 20. Fallahi B, Beiki D, Gholamrezanezhad A, et al. Single Tc99m Sestamibi injection, double acquisition gated SPECT after stress and during low-dose dobutamine infusion: a new suggested protocol for evaluation of myocardial perfusion. *Int J Cardiovasc Imaging* 2008;24: 825-835.
 21. Elhendy A, van Domburg RT, Sozzi FB, Poldermans D, Bax JJ, Roelandt JR. Impact of hypertension on the accuracy of exercise stress myocardial perfusion imaging for the diagnosis of coronary artery disease. *Heart* 2001;85(6):655-661.
 22. Leoncini M, Marcucci G, Scigrà R, et al. Prediction of functional recovery in patients with chronic coronary artery disease and left ventricular dysfunction combining the evaluation of myocardial perfusion and of contractile reserve using nitrate-enhanced technetium-99m sestamibi gated single-photon emission computed tomography and Dobutamine stress. *Am J Cardiol* 2001;87:1346-1350.
 23. Nakamura M, Takeda K, Ichihara T, et al. Feasibility of simultaneous stress 99mTc-sestamibi/rest 201Tl dual-isotope myocardial perfusion SPECT in the detection of coronary artery disease. *J Nucl Med* 1999;40: 895-903.
 24. Levine MG, McGill CC, Ahlberg AW, et al. Functional assessment with electrocardiographic gated single-photon emission computed tomography improves the ability of technetium-99m sestamibi myocardial perfusion imaging to predict myocardial viability in patients undergoing revascularization. *Am J Cardiol* 1999;83:1-5.
 25. Milavetz JJ, Miller TD, Hodge DO, Holmes DR, Gibbons RJ. Accuracy of single-photon emission computed tomography myocardial perfusion imaging in patients with stents in native coronary arteries. *Am J Cardiol* 1998;82:857-861.
 26. Husmann L, Wiegand M, Valenta I, et al. Diagnostic accuracy of myocardial perfusion imaging with single photon emission computed tomography and positron emission tomography: a comparison with coronary angiography. *Int J Cardiovasc Imaging* 2008; 24: 511-518.
 27. Bateman TM, Heller GV, McGhie AI, et al. Diagnostic accuracy of rest/stress ECG-gated Rb-82 myocardial perfusion PET: Comparison with ECG-gated Tc-99m sestamibi SPECT. *J Nucl Cardiol* 2006;13:24-33.
 28. Stewart RE, Schwaiger M, Molina E, et al. Comparison of rubidium-82 positron emission tomography and thallium-201 SPECT imaging for detection of coronary artery disease. *Am J Cardiol* 1991;67:1303-1310.
 29. Go RT, Marwick TH, MacIntyre WJ, et al. A prospective comparison of rubidium-82 PET and thallium-201 SPECT myocardial perfusion imaging utilizing a single dipyrindamole stress in the diagnosis of coronary artery disease. *J Nucl Med* 1990;31:1899-1905.
 30. Tamaki N, Yonekura Y, Senda M, et al. Value and limitation of stress thallium-201 single photon emission computed tomography: comparison with nitrogen-13 ammonia positron tomography. *J Nucl Med* 1988;29:1181-1188.
 31. Williams BR, Mullani NA, Jansen DE, Anderson BA. A retrospective study of the diagnostic accuracy of a community hospital-based PET center for the detection of coronary artery disease using rubidium-82. *J Nucl Med* 1994;35:1586-1592.
 32. Simone GL, Mullani NA, Page DA, Anderson BA. Utilization statistics and diagnostic accuracy of a nonhospital-based positron emission tomography center for the detection of coronary artery disease using rubidium-82. *Am J Physiol Imaging* 1992;7:203-209.
 33. Marwick TH, Nemecek JJ, Stewart WJ, Salcedo EE. Diagnosis of coronary artery disease using exercise echocardiography and positron emission tomography: comparison and analysis of discrepant results. *J Am Soc Echocardiogr* 1992;5:231-238.
 34. Grover-McKay M, Ratib O, Schwaiger M, et al. Detection of coronary artery disease with positron emission tomography and rubidium 82. *Am Heart J* 1992;123:646-652.
 35. Demer LL, Gould KL, Goldstein RA, et al. Assessment of coronary artery disease severity by positron emission tomography. Comparison with quantitative arteriography in 193 patients. *Circulation* 1989;79:825-835.
 36. Gould KL, Goldstein RA, Mullani NA, et al. Noninvasive assessment of coronary stenoses by myocardial perfusion imaging during pharmacologic coronary vasodilation. VIII. Clinical feasibility of positron cardiac imaging without a cyclotron using generator-produced rubidium-82. *J Am Coll Cardiol* 1986;7:775-789.
 37. Di Carli MF, Dorbala S, Curillova Z, et al. Relationship between CT coronary angiography and stress perfusion imaging in patients with suspected ischemic heart disease assessed by integrated PET-CT imaging. *J Nucl Cardiol* 2007;14:799-809.
 38. Santana CA, Folks RD, Garcia EV, et al. Quantitative 82Rb PET/CT: Development and validation of myocardial perfusion database. *J Nucl Med* 2007;48:1122-1128.
 39. Sampson UK, Dorbala S, Limaye A, Kwong R, Di Carli MF. Diagnostic Accuracy of Rubidium-82 Myocardial Perfusion Imaging with Hybrid Positron Emission Tomography/Computed Tomography in the Detection of Coronary Artery Disease. *J Am Coll Cardiol* 2007; 49:1052-1058.
 40. Giorgetti A. Baseline/post-nitrate Tc-99m tetrofosmin mismatch for the assessment of myocardial viability in patients with severe left ventricular dysfunction: comparison with baseline Tc-99m tetrofosmin scintigraphy/FDG PET imaging. *J Nucl Cardiol* 2004;11(2):142-151.
 41. Elhendy A. Dobutamine technetium-99m tetrofosmin SPECT imaging for the diagnosis of coronary artery disease in patients with limited exercise capacity. *J Nucl Cardiol* 2000;7(6):649-656.
 42. Santana-Boado C. Diagnostic accuracy of technetium-99m-MIBI myocardial SPECT in women and men. *J Nucl Med* 1998;39(5):751-755.
 43. Namdar M. Integrated PET/CT for the assessment of coronary artery disease: a feasibility study. *J Nucl Med* 2005;46(6):930-935.
 44. Schepis T. Added value of coronary artery calcium score as an adjunct to gated SPECT for the evaluation of coronary artery disease in an intermediate-risk population. *The Journal of Nuclear Medicine* 2007;48(9):1424-1430.
 45. Di Carli MF, Dorbala S. Integrated PET/CT for cardiac imaging. *Q J Nucl Med Mol Imaging* 2006;50(1):139-144.
 46. Fricke H, Elsner A, Weise R, et al. Quantitative myocardial perfusion PET combined with coronary anatomy derived from CT angiography: Validation of a new fusion and visualisation software. *Med Phys* 2009;19(3):182-188.
 47. Di Carli MF, Dorbala S, Meserve J, et al. Clinical myocardial perfusion PET/CT. *J Nucl Med* 2007;48(5):783-793.

48. Machac J, Machac. Cardiac positron emission tomography imaging. *Seminars in Nucl Med* 2005;35(1):17-36.
49. Gaemperli O. Functionally Relevant Coronary Artery Disease: Comparison of 64-Section CT Angiography with Myocardial Perfusion SPECT1. *Radiology* 2008;248(2):414-423.
50. Raff GL. Diagnostic accuracy of noninvasive coronary angiography using 64-slice spiral computed tomography. *J Am Coll Cardiol* 2005;46(3):552-557.
51. Pugliese F. Diagnostic accuracy of non-invasive 64-slice CT coronary angiography in patients with stable angina pectoris. *Eur Radiol* 2006;16(3):575-582.
52. Scheffel H. Accuracy of dual-source CT coronary angiography: first experience in a high pre-test probability population without heart rate control. *Eur Radiol* 2006;16(12):2739-2747.
53. Fisher LD. Reproducibility of coronary arteriographic reading in the coronary artery surgery study (CASS). *Cathet Cardiovasc Diagn* 1982;8(6):565-575.